

# RAM DT (2019-2021) vs. RAM DS (2018-2021 Classic)



The 2019 RAM DS models carry this badge.



**RAM**

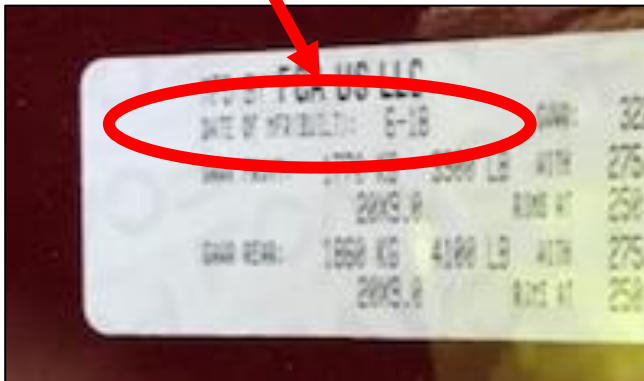
# How to locate a RAM DS 1500 Build Date

## FINDING THE BUILD DATE **ON THE TRUCK:**

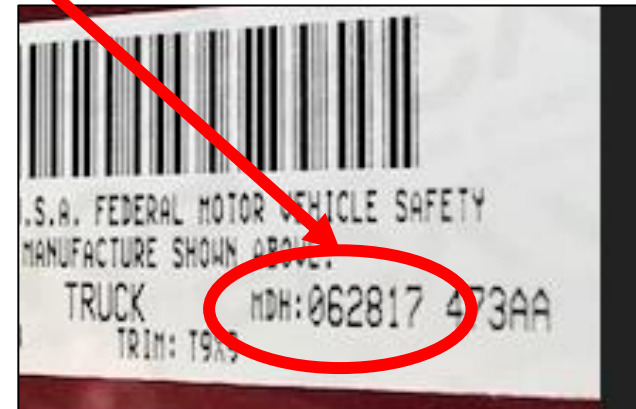
- There is one white sticker located on the driver door. We will need the following information from **TWO locations** on this sticker to determine the truck's build date.



1



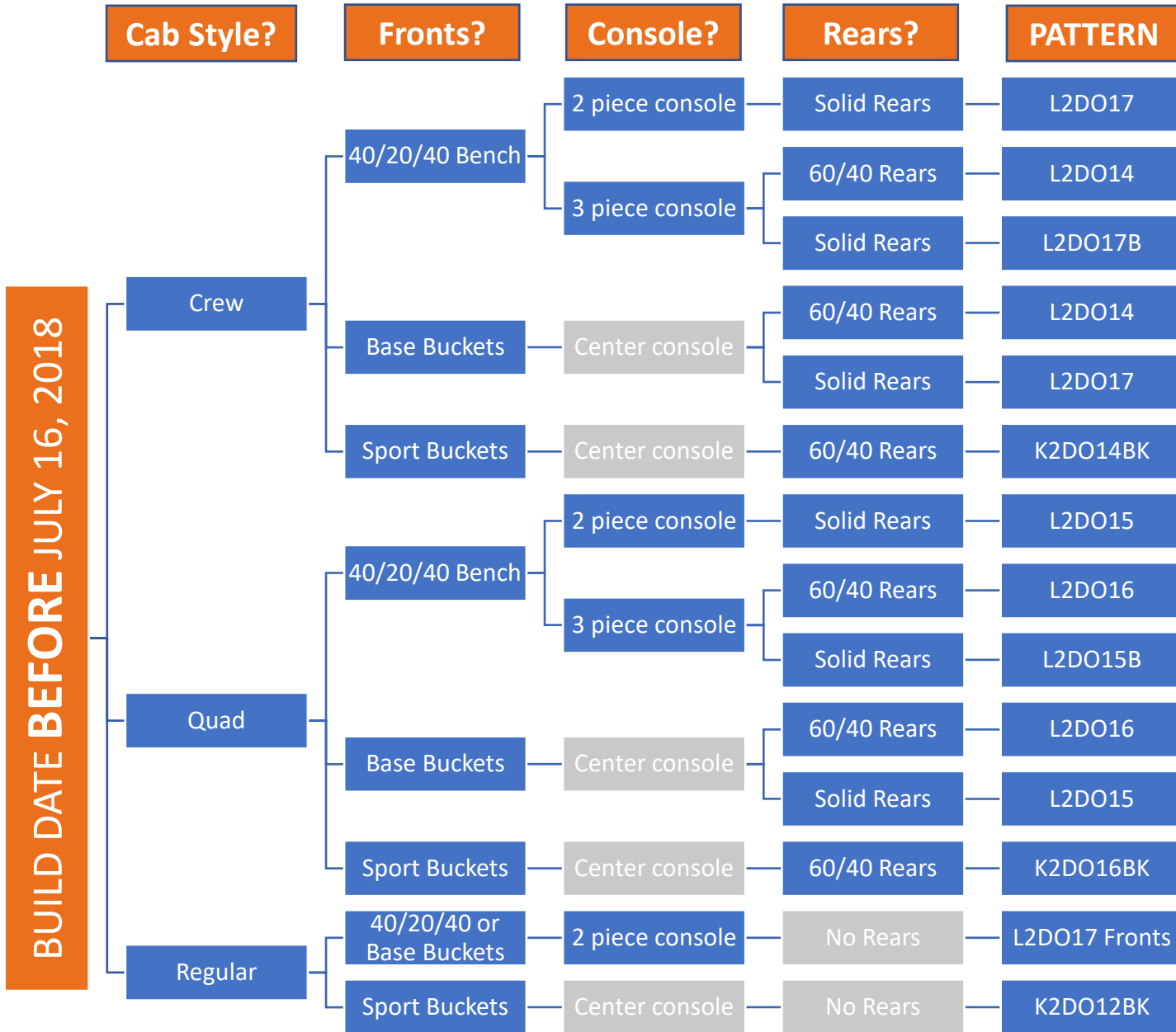
2

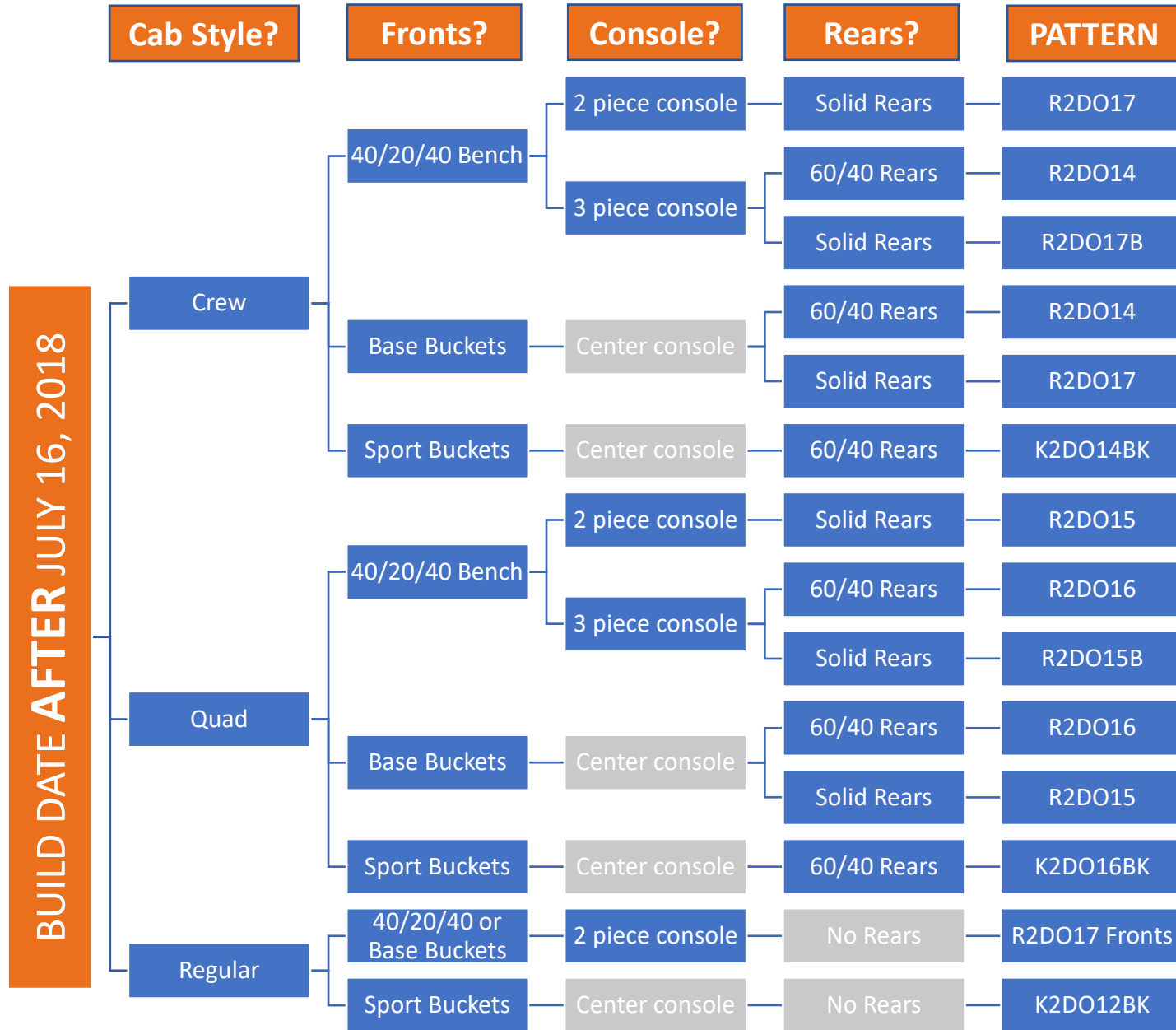


- DATE of MFR (BUILT): **MONTH-YEAR (6-18)**
- MDH: MONTH-**DAY**-**HOUR (062817)**

The truck in this example was built **6/28/18** (at 5 p.m.)

This is the date we need to know to determine if the truck was built **before or after 7/16/18.**

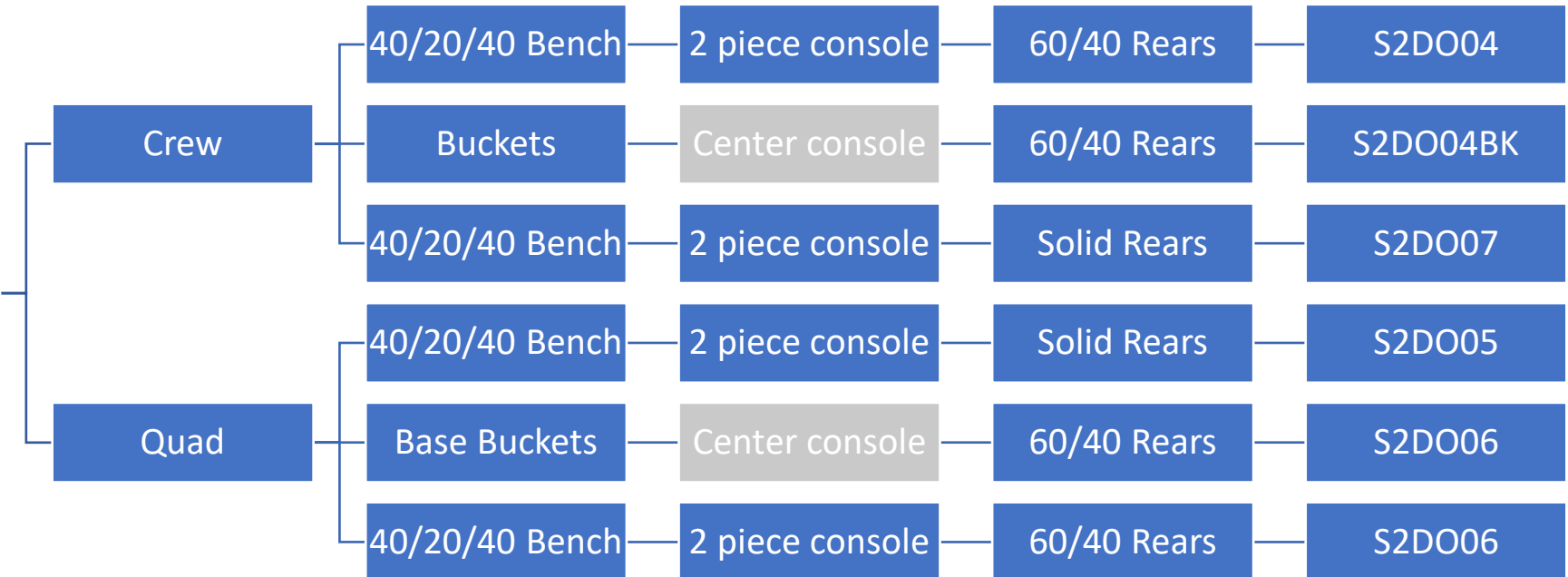




# How to order a 2019-2021 RAM 1500 (DT)

**Cab Style?**      **Fronts?**      **Console?**      **Rears?**      **PATTERN**

**RAM DT**



**Laramie with  
Factory Leather**

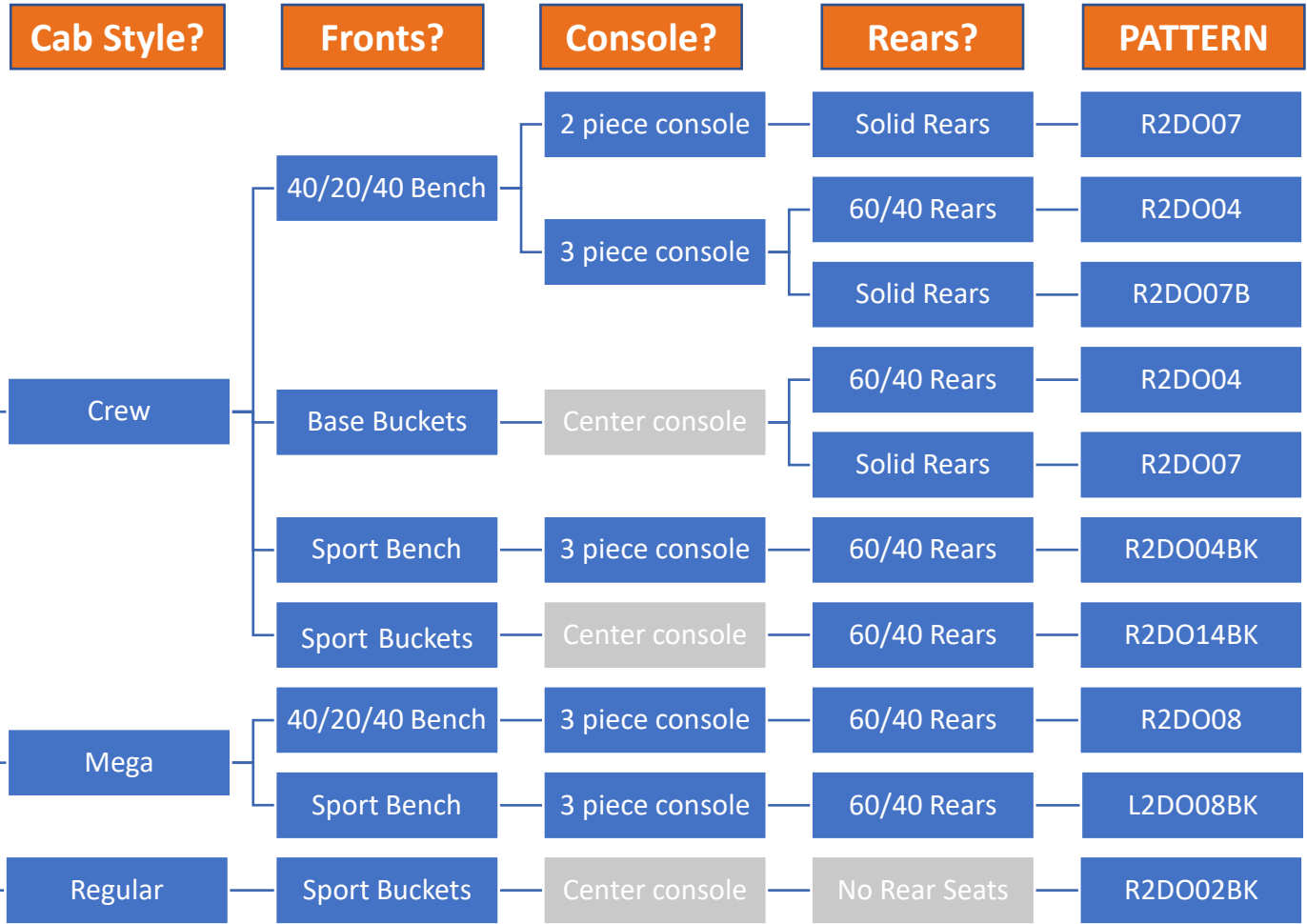


# How to order a 2018 RAM 2500 / 3500

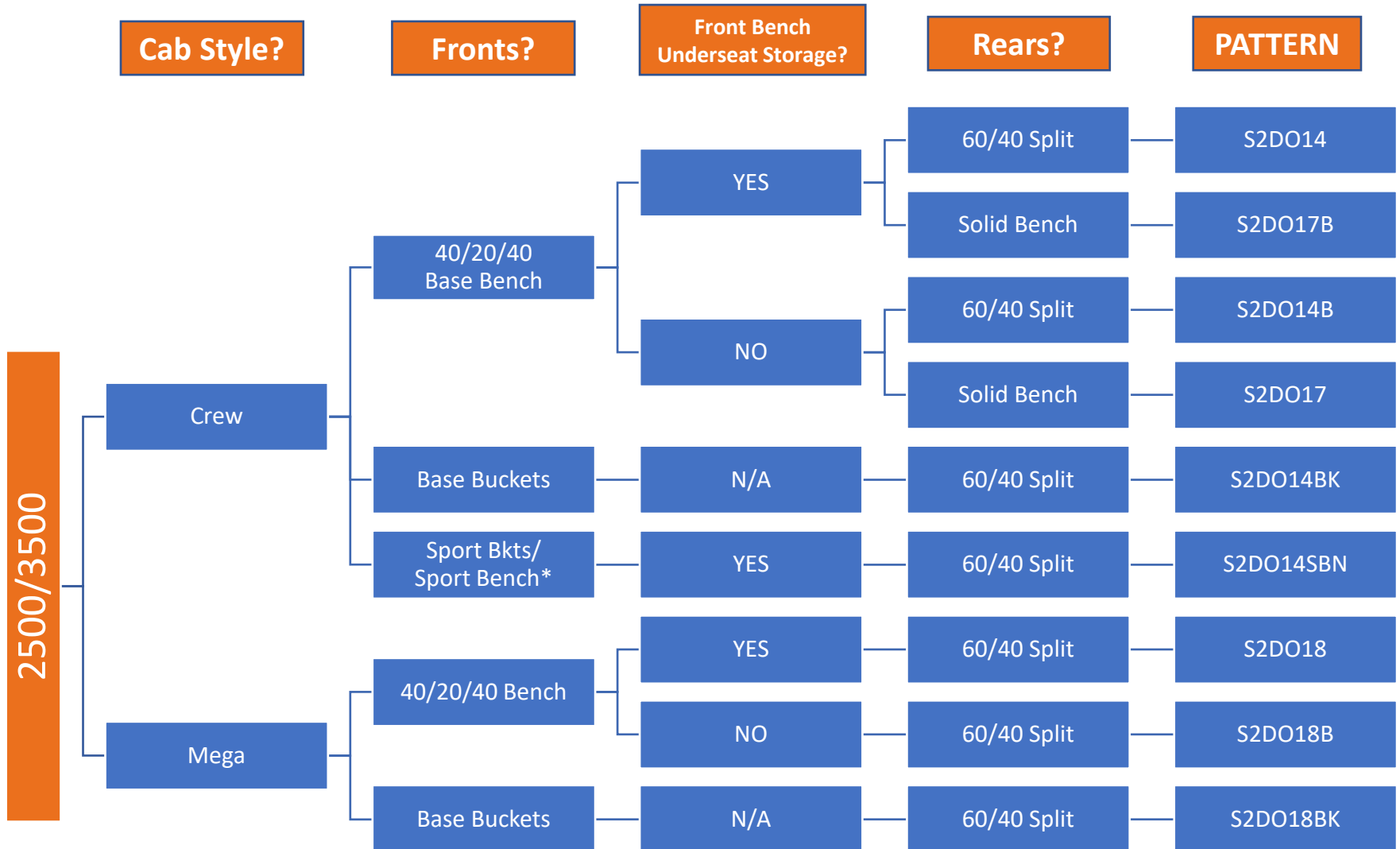
2500/3500

Automatic or  
Manual  
Transmission?

**IF MANUAL,  
ORDER FRONT  
CONSOLE  
\*K2DO98  
WITH THE KIT**



# How to order a 2019-2021 RAM 2500/3500 (DJ/D2)



\*Sport Bench only available in the POWER WAGON. Sport Buckets in FACTORY LEATHER LARAMIE.

For RAM HD Regular cabs, order fronts from any CREW pattern except S2DO14SBN.

## BASE BUCKET



## SPORT 40/20/40 Bkts/Bench (higher shoulders)

Only available in the PowerWagon / Laramie

